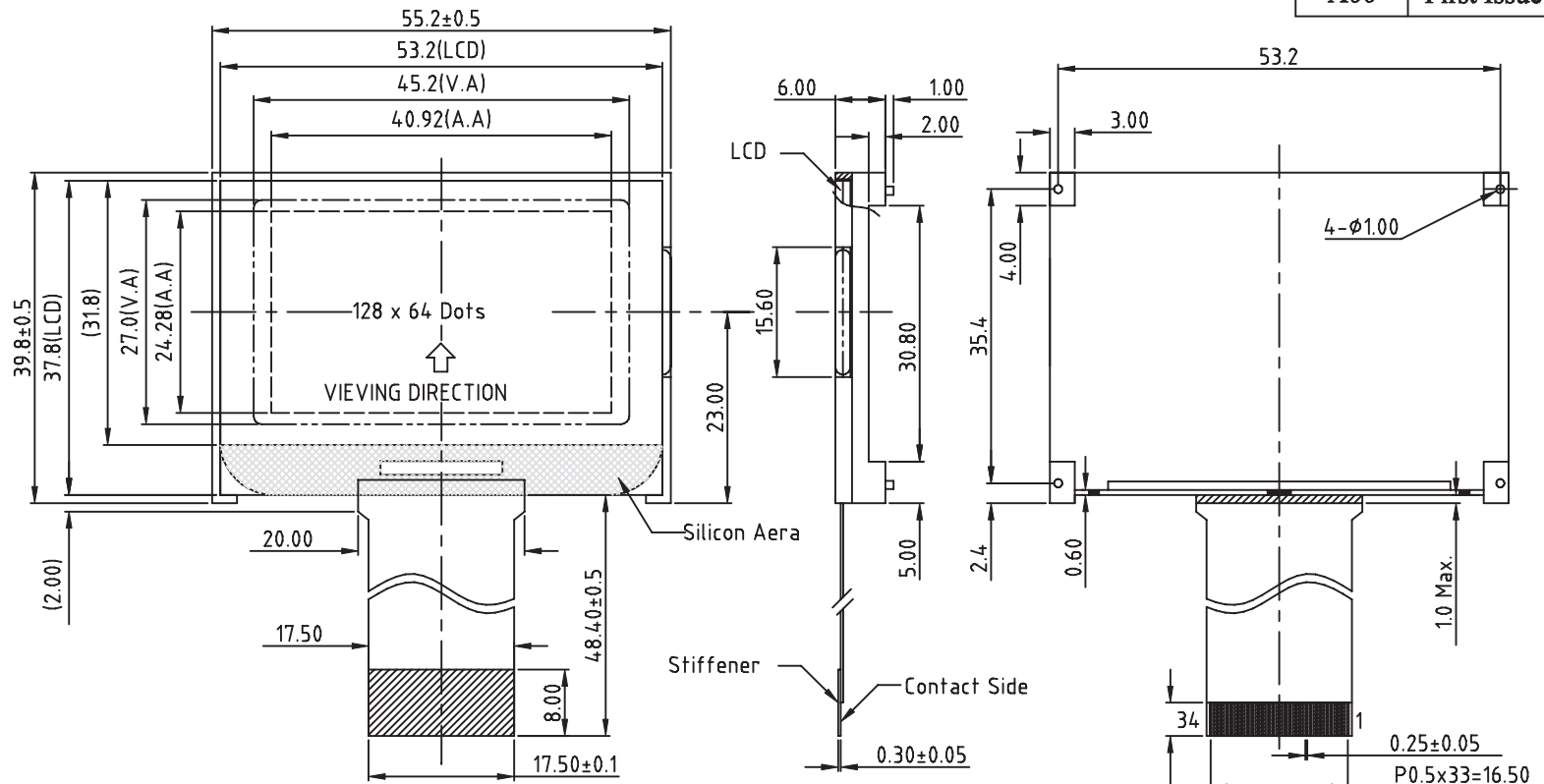


REV	Description	Date
A00	First Issue	2008-MAR-14

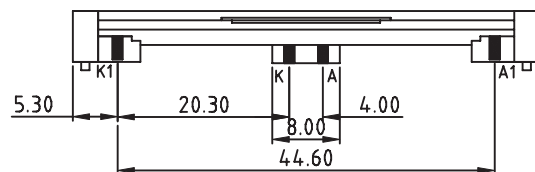


COG PIN ASSIGNMENT

Pin No.	Signal	Pin No.	Signal
1	IRS	18	CAP5-
2	/HPM	19	VOUT
3	P/S	20	VSS
4	C86	21	VDD
5	VR	22	D7(SI)
6	V5	23	D6(SCL)
7	V4	24	D5
8	V3	25	D4
9	V2	26	D3
10	V1	27	D2
11	VRS	28	D1
12	CAP4-	29	D0
13	CAP2+	30	RD(E)
14	CAP2-	31	/WR(R/W)
15	CAP1-	32	A0
16	CAP1+	33	/RES
17	CAP3-	34	/CS1

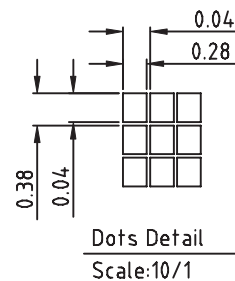
BL PIN ASSIGNMENT

A	RED : ANODE
K	RED: CATHODE
A1	Y-G: ANODE
K1	Y-G: CATHODE



SPECIFICATIONS:

- FSTN/+VE/TRANSFLECTIVE MODE
- 1/65 DUTY, 1/9 BIAS, VOP=8.4V, VDD=3.3V
- VIEWING ANGLE=6 O'CLOCK
- OP.TEMP.= -20°C TO +70°C
ST.TEMP.= -30°C TO +80°C
- WITH BI-COLOR LED BACKLIGHT,
 - RED: 1.9V@50mA
 - Y-G: 2.1V@50mA



Description: MECHANICAL SPECIFICATIONS

Scale:

Sheet : 1 of 1

Unspecified Tol.
±0.3

Unit
mm

Approvals

Date

Draw:

Check:

Approve:

IDS Intelligent Display Solutions
 www.i-lcd.com info@i-lcd.com

Project Number

Item Number

CI064-4026-01

Do Not Scale This Drawing



Projection