

# How to fit a CI064-4021-xx 128x64 display with RGB backlight

Function	Connector
Main board	J1
Display	J3
Resistive Touch	J4
Backlight connector	PCB pads next to R17

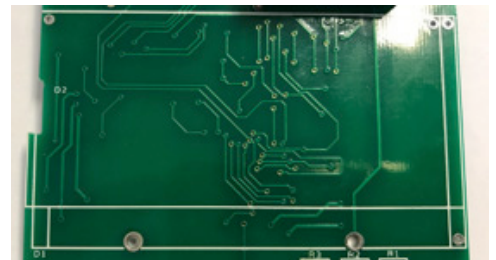
## 1. Fit the display

The display mounts on the top side of the PCB and fits within the white box marked D2.

For temporary applications use double sided tape to fix the display to the PCB, for longer term use adhesive.

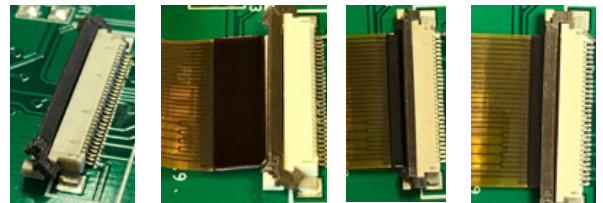
Plastic pips on the display fit corresponding holes in the PCB

The backlight connection positions are the four pads on the edge of the PCB near R17 corresponding to the solder pads on the display. These are fragile and must be very carefully soldered to avoid damaging the display.



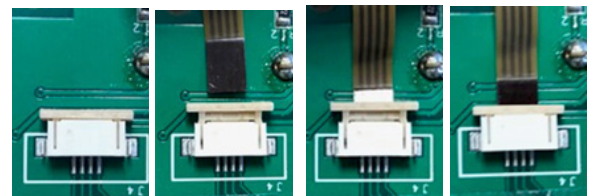
## 2. Insert the display FFC into connector J3

- Very carefully lift up the brown lever on the connector
- Line up the FFC to the connector, ensuring the contacts are facing down towards the PCB
- Slide the FFC into the connector until it reaches the back of the connector
- Very carefully push the brown lever back down



## 3. Insert the touch screen FFC into connector J4 (If applicable)

- Very carefully pull the connector front clip forward
- Line up the FFC to the connector, ensuring the contacts are facing down towards the PCB
- Slide the FFC into the connector until it reaches the back of the connector
- Very carefully push the front clip back in



## 4. Backlight controls

Function	Control
Red	R1
Blue	R2
Green	R3

