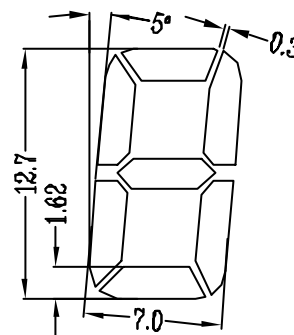
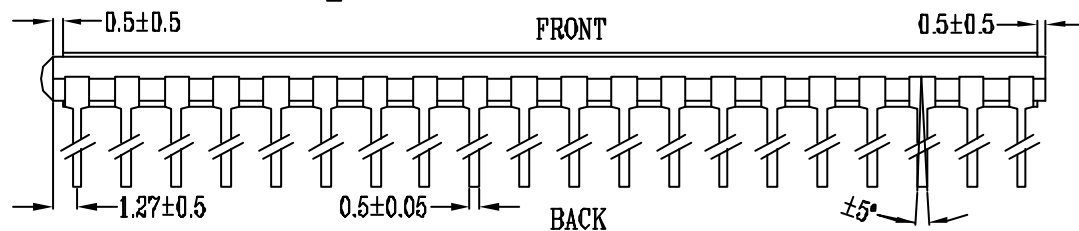
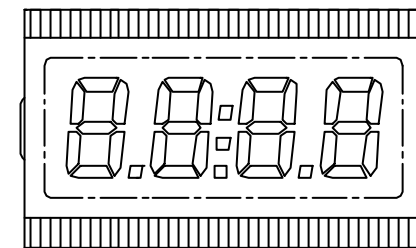


PIN	COM	PIN	COM
1	COM	21	1A
2	NC	22	1F
3	NC	23	1G
4	NC	24	2B
5	4E	25	2A
6	4D	26	2F
7	4C	27	2G
8	4DP	28	L
9	3E	29	3B
10	3D	30	3A
11	3C	31	3F
12	3DP	32	3G
13	2E	33	NC
14	2D	34	4B
15	2C	35	4A
16	2DP	36	4F
17	1E	37	4G
18	1D	38	NC
19	1C	39	NC
20	1B	40	COM

↑ 6 O'CLOCK VIEWING DIRECTION



SCALE 1:1

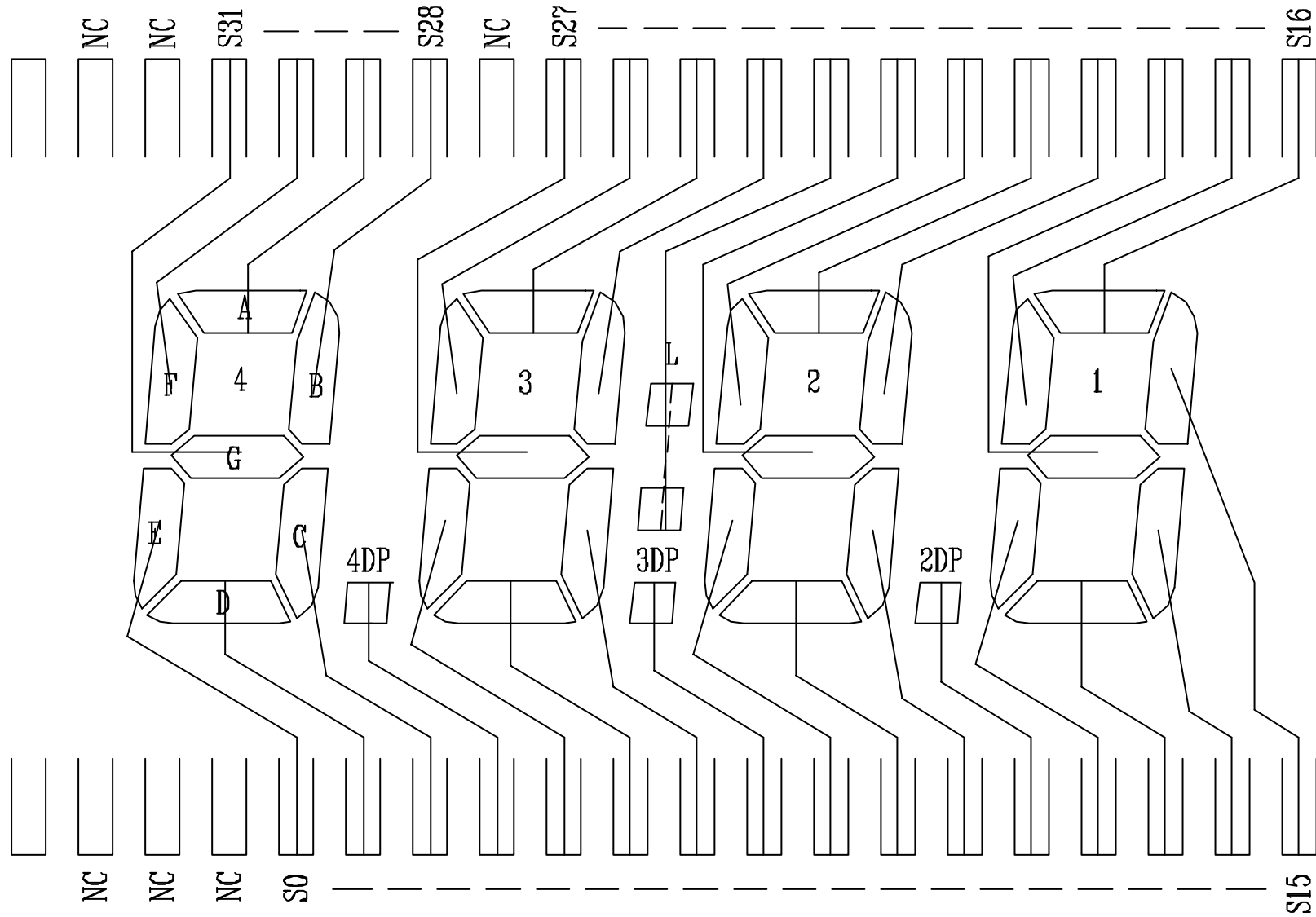


NOTE:

- 1 DISPLAY TYPE : TN
- 2 VIEWING DIRECTION : 6 O'CLOCK
- 3 POLARIZER MODE : REFLECTIVE/POSITIVE
- 4 DRIVE METHOD : 1/1 DUTY 1/1 BIAS
- 5 OPERATING VOLTAGE : 5.0V(FOR REFERENCE VOLTAGE)
- 6 OPERATING TEMP : -10°C--+60°C
- 7 STORAGE TEMP : -20°C--+60°C
- 8 CONNECTION : PIN
- 9 FRAME FREQUENCY : 64HZ
- 10 CUSTOMER MODE : 4-Digit LCD

REVISION RECORD		NAME	DATE
1			
2			
3			
4			

Intelligent Display Solutions www.i-lcd.com info@i-lcd.com		VERSION	A	UNIT	MM	NO. 1/4	TLDP-4002-01
		APPROVED		CHECKED		DRAWN	

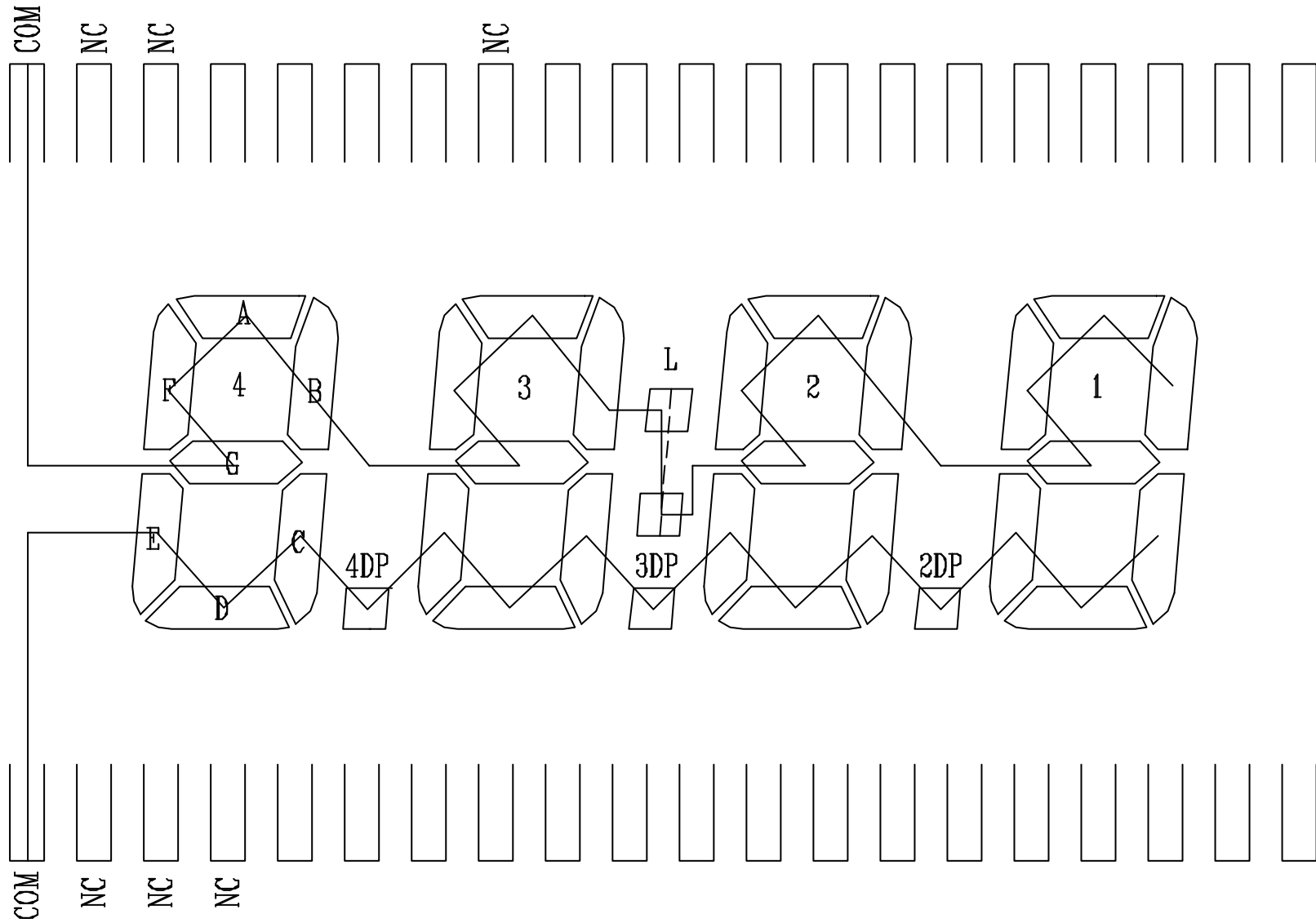


SEGMENT




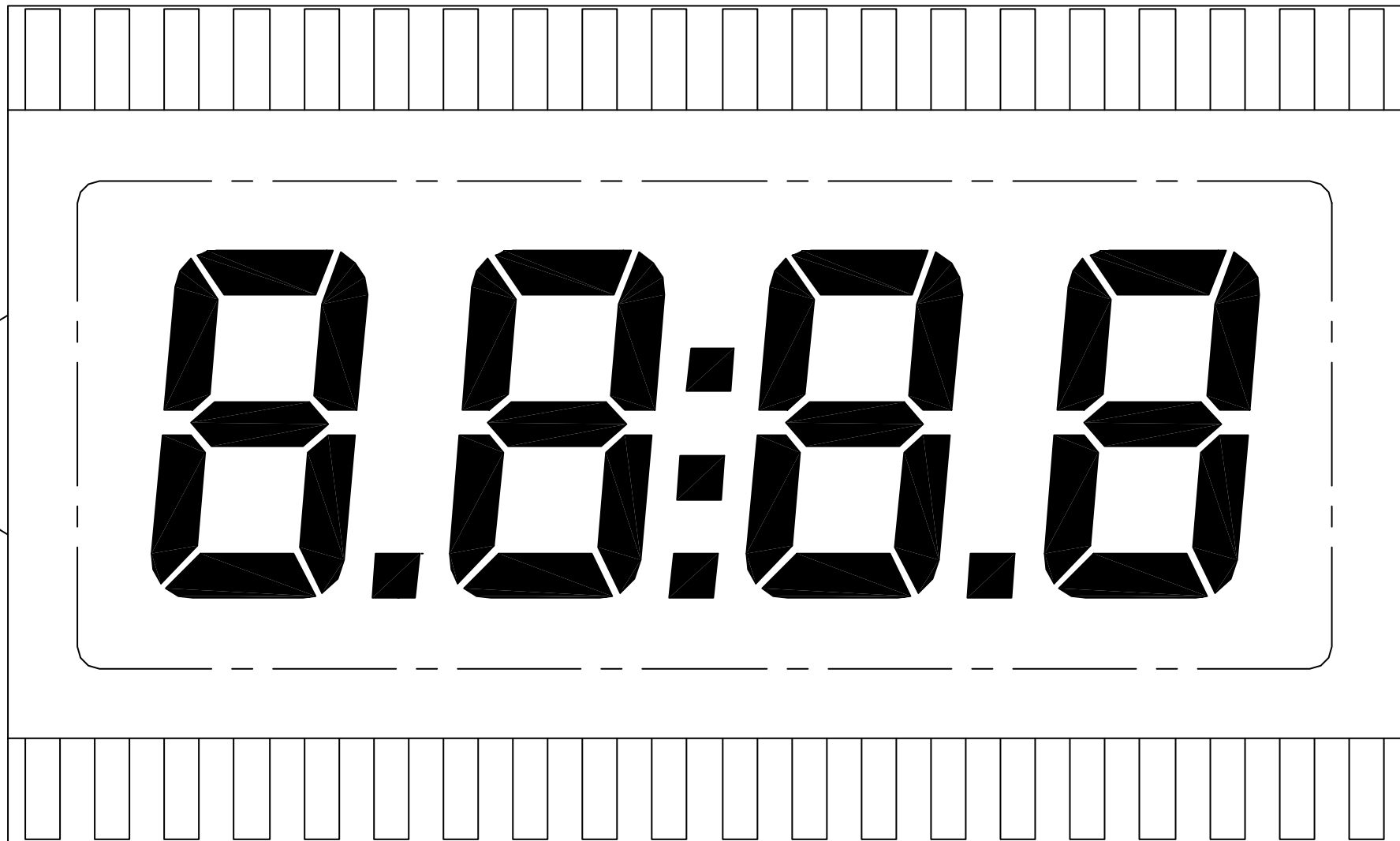
Intelligent Display Solutions
www.i-lcd.com info@i-lcd.com

VERSION	A	UNIT	MM	NO. 2/4	TLDP-4002-01
---------	---	------	----	---------	--------------



COMMON

 Intelligent Display Solutions www.i-lcd.com info@i-lcd.com					
VERSION	A	UNIT	MM	NO. 3/4	TLDP-4002-01



00:00

DISPLAY EFFECT



Intelligent Display Solutions
www.i-lcd.com info@i-lcd.com

VERSION	A	UNIT	MM	NO. 4/4	TLDP-4002-01
---------	---	------	----	---------	--------------