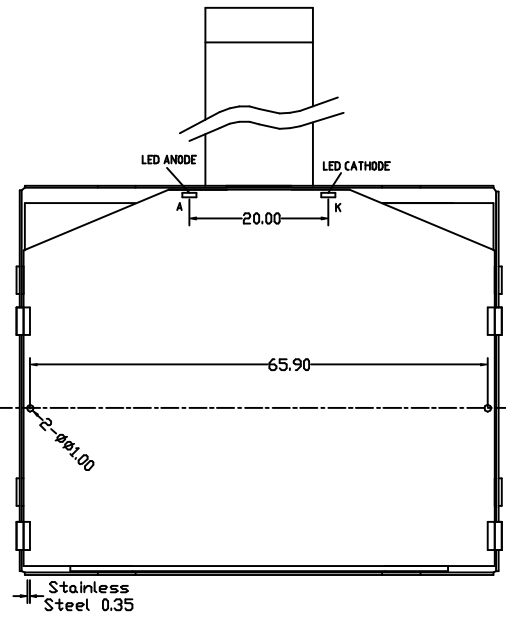
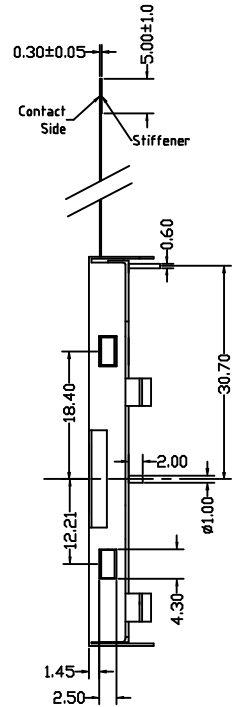
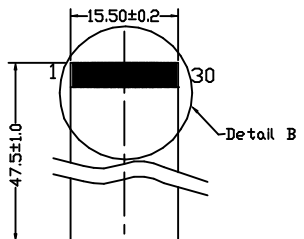
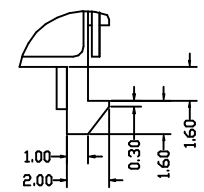
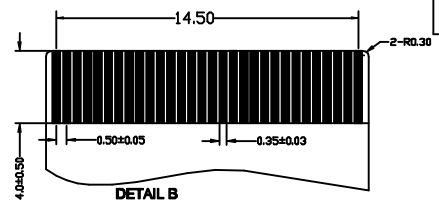
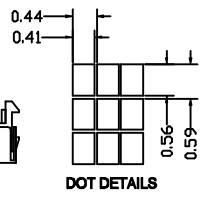
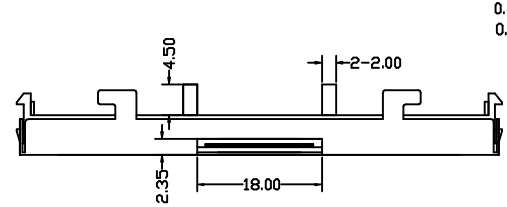
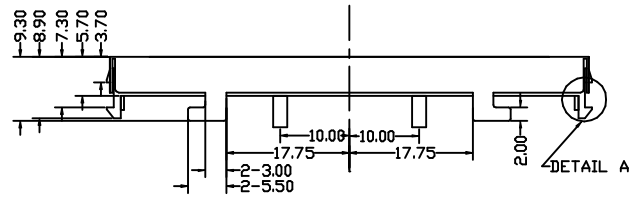
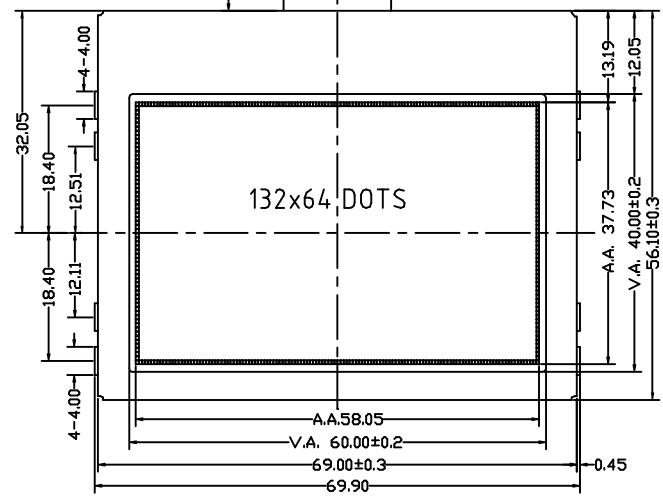


REV	Description	Date
A00	First Issue	2005-MAR-10



PIN ASSIGNMENT

PIN	NAME	PIN	NAME
1	IRS	16	VSS
2	P/S	17	VDD
3	C68	18	D7
4	VF	19	D6
5	V6	20	D5
6	V5	21	D4
7	V4	22	D3
8	V3	23	D2
9	V2	24	D1
10	C2P	25	D0
11	C2N	26	E<RD>
12	C1N	27	R/W (WR)
13	C1P	28	D/C
14	C3N	29	/CS1
15	VEE	30	/RES



- SPECIFICATIONS:
- 1) FSTN/+VE/BLUE/TRANSFLECTIVE MODE
 - 2) 1/65 DUTY, 1/9 BIAS, VLCD=9.5V
 - 3) VIEWING DIRECTION : 12 O'CLOCK
 - 4) OP. TEMP.= -0°C to +50°C
ST. TEMP.= -10°C to +60°C
 - 5) IC: 'SOLOMON' SSD1815
 - 6) W/ WHITE LED BACKLIGHT, 3.6V@30mA, 50mA MAX.

Description: MECHANICAL SPECIFICATIONS

Scale: Sheet : 1 of 1

Unspecified Tol. ±0.3 **Unit mm**

Approvals **Date**

Draw:

Check:

Approve:

Project Number TMGG13264B-12

Item Number

Do Not Scale This Drawing

Projection

IDS Intelligent Display Solutions
www.i-lcd.com info@i-lcd.com